

Hochfeste Ringschrauben und Ringmuttern

Güteklasse 8, rot lackiert, Bauform wie DIN 580/582

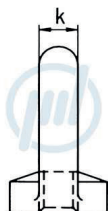
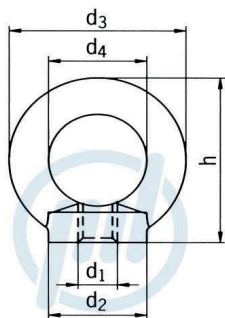
Art. Nr. 55rmh... / 55rsh...



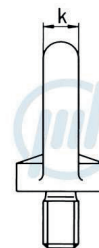
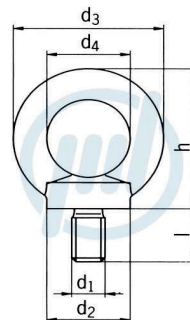
WIEDENMANN

... weil viel davon abhängt!

Gewinde d1	Tragkraft lotrecht kg	Tragkraft bei Belastung unter 90°	d3	d4	h	k	l
M 8	800	200	45	25	45	10	13
M 10	1.000	250	45	25	45	10	17
M 12	1.600	400	63	35	62	14	22
M 16	4.000	1.000	63	35	62	14	29
M 20	6.000	1.500	90	50	90	20	30
M 24	8.000	2.000	90	50	90	20	38
M 30	12.000	3.000	108	60	109	24	45
M 36	16.000	4.000	144	80	144	30	65
M 42	24.000	6.000	144	80	144	30	65
M 48	32.000	8.000	166	90	166	35	70



Rinmutter



Ringschraube